




# ARTIST OF THE MONTH APRIL 2024

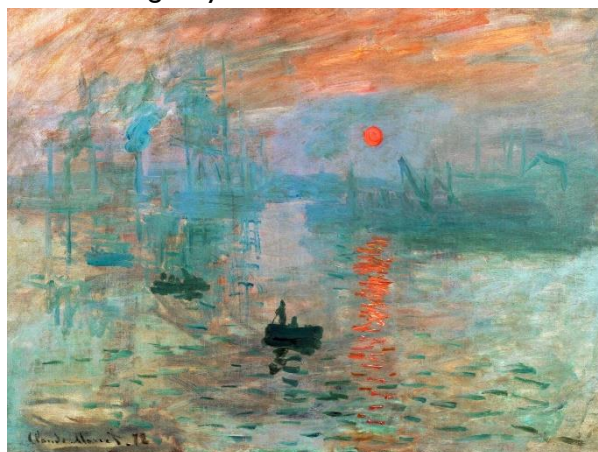
Artist of the month is a competition that runs in school. Each month we look at a different artist and their work, children can then respond to this artist by either creating a picture, taking a photograph, writing a story, doing some research or a different response that inspires them. Mrs Britten our Art and Design subject lead shares the artist of the month via the school art notice board. The artist of the month winner will be announced at the end of each month.

To enter you need to respond to the artist however you choose. Put your entry into the 'Artist of the Month' basket next to the art gallery display or email it to [enquiries@williamgilbertend.derbyshire.sch.uk](mailto:enquiries@williamgilbertend.derbyshire.sch.uk) with the title 'Artist of the Month'. Please enter by Tuesday 30<sup>th</sup> 2024.

This month's artist is: **Claude Monet (1840 – 1926)**

		
<p><i>'The Artist's Garden at Giverny'</i> (1900)</p>	<p><i>'San Giorgio Maggiore at Dusk'</i> (1912)</p>	<p><i>'The Water Lily Pond (1899)</i></p>

Monet was born in Paris in 1840 and as a child he showed great talent as an artist. In 1872 he painted a picture of a harbour using very loose brushstrokes. He called the picture Impression, Sunrise (1872).



This painting was exhibited along with paintings by his friends who also painted 'en plein air'. The artists became known as the impressionists after the title of Monet's painting.

**Impressionism** is a style of painting that began in France in the early 1860s when artists started painting pictures outside, rather than in their studios. This was called 'en plein air' (which is French for open air).

Taking his easel and paints with him, Monet would choose a spot he liked – a lake, a pretty garden or a field full of large trees. Painting directly from nature, Monet worked quickly. He had to capture the weather before it changed. Monet noticed that on a sunny day a field of grass looked bright green. But during a storm, it turned a deeper, darker shade, like an emerald. He liked the way that weather changes the colour of a landscape and wanted to show this in his paintings. Monet painted many paintings, including hundreds of waterlilies, in his garden at Giverny in France. He painted in all seasons and in all weathers for over 30 years.

**Your turn** Why not have a go at painting *en plein air*, which means outside, inspired by Claude Monet – find out more about Claude Monet by scanning the QR codes to take you to videos on YouTube – please remember to watch with a grown up. Or follow the link below.

**Why not paint a picture outside with lots of little brushstrokes and dabs of paint to give a colourful impression of your garden, the countryside or park.**

Here are links to find out more about Claude Monet:

1. Tate Kids website and short video about 'The Impressionists'

<https://www.tate.org.uk/kids/explore/who-is/who-claude-monet>



2. YouTube video clip about Claude Monet for children

<https://www.youtube.com/watch?v=83Gj0LBWXpM>



3. Take a virtual tour around Claude Monet's garden in Giverny

<https://fondation-monet.com/en/>

